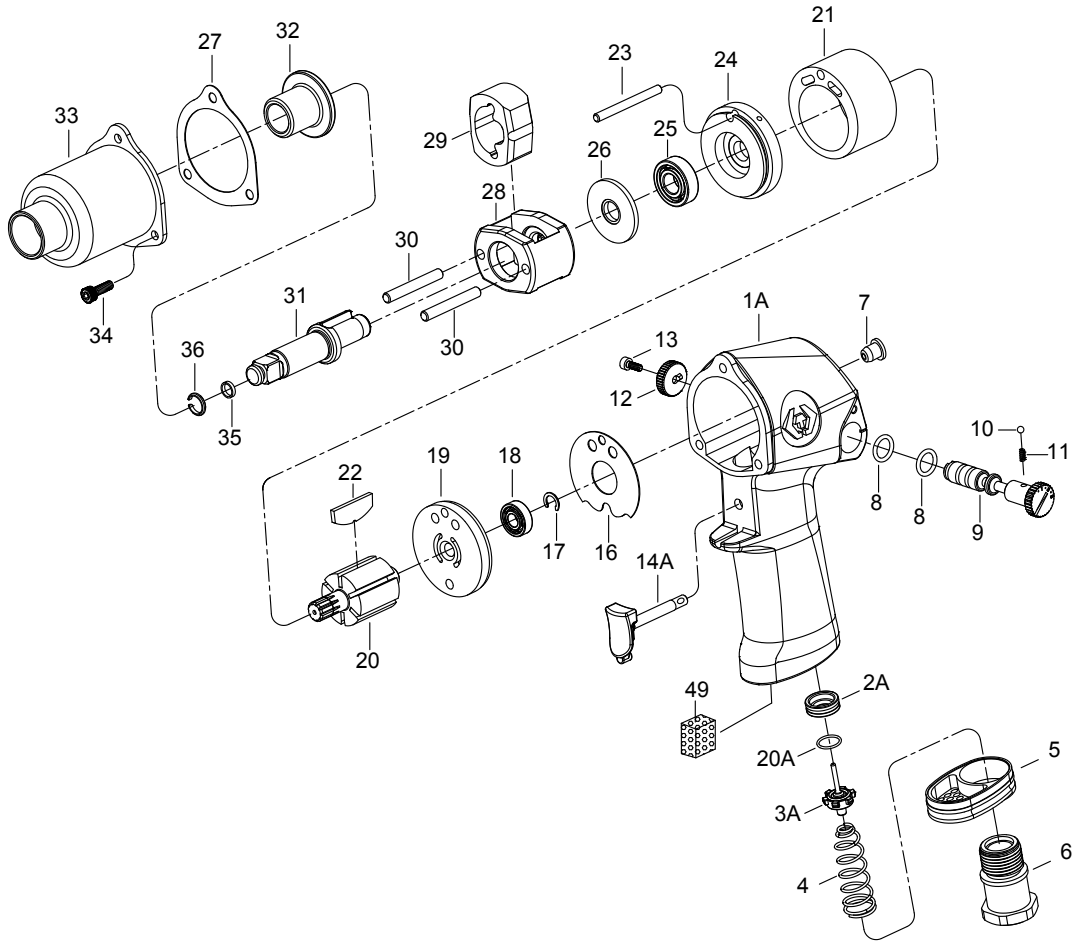


3/8" DR. IMPACT WRENCH



NO.33311-020
33311-021



INDEX NO.	KT No.	DESCRIPTION	REQ'D NO.	INDEX NO.	KT No.	DESCRIPTION	REQ'D NO.
★ 1A	033311-A01	Housing Assembly (incl. 2A.7.20A)	1	22	033311-A22	Rotor Blade	6
2A	033411-A02	Throttle Valve Seat	1	23	033311-A23	Cylinder Dowel	1
3A	033411-A03	Throttle Valve Assembly	1	24	033311-A24	End Plate	1
4	033311-A04	Spring	1	25	033311-A25	Bearing	1
5	033311-A05	Exhaust Deflector	1	26	033311-A26	Washer	1
6	033311-A06	Air Inlet (for 19 BSPT)	1	27	033311-A27	Gasket	1
6A	033311-A06A	Air Inlet (for 18 NPT)	1	28	033311-A28	Hammer Frame	1
● 7	033411-A07	Grease Fitting	1	29	033311-A29	Hammer	1
8	033311-A08	O-Ring	2	30	033311-A30	Hammer Pin	2
9	033311-A09	Reverse Valve	1	31	033311-A31	Standard Anvil	1
10	033311-A10	Steel Ball	1	32	033311-A32	Bushing	1
11	033311-A11	Spring	1	33	033311-A33	Hammer Case	1
12	033311-A12	Reverse Valve Knob	1	34	033311-A34	Screw	3
13	033311-A13	Screw	1	35	033311-A35	O-Ring	1
★ 14A	033311-A14A	Trigger Assembly	1	36	033311-A36	Socket Retainer	1
16	033311-A16	Gasket	1	49	033621-B43	Muffler Element	1
17	033311-A17	Retainer	1	TK-01	033311-ATK1	End Plate Assembly(incl. 18.19)	
18	033311-A18	Bearing	1	TK-02	033311-ATK2	End Plate Assembly(incl. 24.25)	
19	033311-A19	End Plate	1	TK-03	033311-ATK3	Standard Anvil Assembly(incl. 31.35.36)	
20	033311-A20	Rotor	1	TK-04	033311-ATK4	Hammer Case Assembly(incl. 32.33)	
20A	033411-A20A	O-Ring	1	TK	033311-ATK	Tune-Up Kit (incl. 8 (2) .10.11.16.22 (6) .27.35.36)	
21	033311-A21	Cylinder	1				

★ Must be purchased in assembly set

● Recommended not to be purchased alone due to assembly difficulty

20131206R4

Air Pressure : 6.2 Bar (90 PSI)

Inspec. Item No.	Square drive		Std. Bolt Size		Free Speed	MAX. Torque		Overall Length		Air Inlet	Air Hose	Avg. Air Consumption		Net Weight		Sound Pressure Level A-weighted	Sound Power Level A-weighted	Sound Pressure Valve Peak C-weighted	Vib. M/S2
	inch	inch	mm	R.P.M	ft-lb	N.m	inch	mm	BSPT/NPT	ID	cfm	l/min	lbs	kgs					
33311-020	3/8	7/16	M11	10000	200	271	5-1/2	139	1/4" BSPT	3/8	2.5	71	2.98	1.35	95.35	106.34	96.40	3.78	
33311-021	3/8	7/16	M11	10000	200	271	5-1/2	139	1/4" NPT	3/8	2.5	71	2.98	1.35	95.35	106.34	96.40	3.78	

