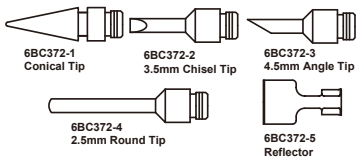
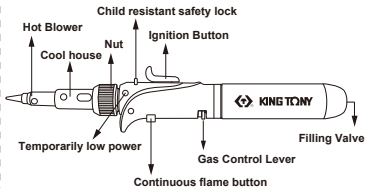
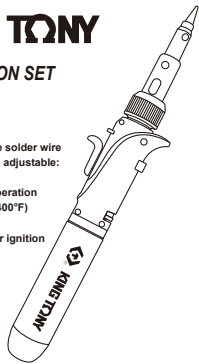




GAS SOLDERING IRON SET

NO.6BC3007

- Power range : 30W-150W
- Cordless , Simple
- Four different tips & Lead free solder wire
- Soldering temperature can be adjustable: 400°C~450°C (750°F~840°F)
- Tank fuel for 90 minutes of operation
- Torch temperature:1300°C (2400°F)
- Fuel capacity: 20ml
- Ready to use 45 seconds after ignition
- Plus pure butane gas



ATTENTION

WARNINGS :

1. Keep the soldering iron away from children.
2. Ignite the soldering iron away from face, hands, clothing or combustible materials.
3. Contains flammable gas under pressure. Never expose the soldering iron to heat above 450°C/840°F or to prolong sunlight.
4. Do not disassemble the unit on your own.
5. Never puncture or put in fire.
6. Work in a fireproof and well ventilated area.
7. Never operate the soldering iron in a close container holding combustible vapors, flammable liquids or explosive materials.
8. Be sure the flame is completely out after use.
9. Only recap the protection cap after cooling.
10. Exhaust vent must be facing upward when place on table in avoidance of possible damage caused by the heat generated while in use.

OPERATING TIPS

1. After filling or refilling with gas, please allow a few minutes for gas to become stabilize before operation.
2. Soldering should NOT be carried out on "live" circuits, as this soldering unit does not possess any special electrical insulation.
3. Keep your soldering sponge moisture.

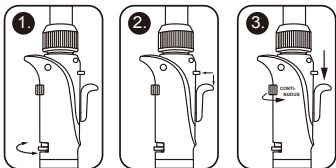
GAS FILLING AND REFILLING

1. Ensure the safety lock button is closed before filling.
2. To fill the soldering iron with gas, hold the container in a vertical position as show in picture.



IGNITION

1. Move the GAS CONTROL LEVER to the middle position.
2. Press the safety lock button and using your thumb of free hand to pull down the ignition button in the same time.
3. Step 2 hand does not relax, in a continuous flame button



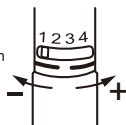
SHUTTING OFF

Move the CONTINUOUS FLAME BUTTON to the "OFF" position.



FLAME LENGTH OR TEMPERATURE ADJUSTMENT

After ignition, the gas control rod movement 1 - 4 to increase or decrease the length of the torch flame Tip temperature or hot air.

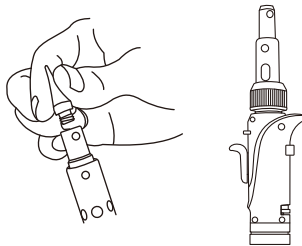


HOW TO FIT OR REPLACE DIFFERENT ACCESSORIES

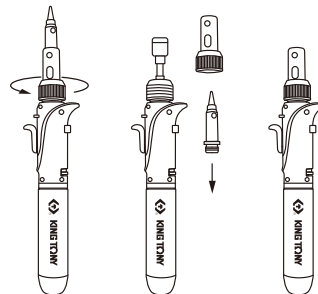
NOTE : ALWAYS ALLOW UNIT TO COOL BEFORE REMOVING OR REPLACING TIPS.

1. REPLACE SOLDERING TIP

On the soldering head unscrew them, then this unit becomes a hot blow



2. When you unscrew the Nut, you can turn loose tip housing and Soldering Head, then this unit becomes an open flame torch.



TROUBLE SHOOTING

TROUBLE	PROBABLE CAUSE	CORRECTION
Does not ignite	1. Empty gas 2. Gas pressure too high or too low	1. Refill Butane Gas 2. Slide GAS CONTROL LEVER to 1 to 4 position
Torch flame has no proper Power	1. Insufficient gas power	1. Refill Butane Gas
Tip does not heat up	1. Insufficient gas power 2. Catalyst is damaged	1. Refill Butane Gas 2. Replace with new part



<http://www.kingtony.com>
Customer service e-mail:service@kingtony.com

896BC3007KT 257x105mm

