



KING TONY

ENGINE STAND

NO.9TY135-150A-B



WARNING



Please wear proper safety gear while working.



Enjoy your work

SAFETY INSTRUCTIONS

Study, understand and follow all warnings and instructions before using this stand. Do not exceed rated capacity. Use only on hard, level surfaces capable of sustaining the load.

Lock mounting plate-rotating mechanism before applying the load.

Be sure engine is centered and secured to mounting plate before applying load to stand.

Off center loads may make the load and handle rotate in either direction when the rotational locking is released. Release the rotational locking device slowly and carefully.

Do not attempt to move the loaded stand across a floor having cracks or other obstacles that could impede movement. Never work directly under a supported load.

Visually inspect stand for damage before use. Check for cracked welds, bent metal and loose, damaged or missing parts. Use only attachments and adapters supplied and approved by the manufacturer. Do not make any alterations to this product.

Failure to heed these warnings may result in personal injury, property damage and/or death. This engine stand is a device used to mount an automotive type of engine when removed from a vehicle. This device is designed to provide access to the engine for servicing and/or rebuilding. The stand incorporates a locking, rotating mounting plate so that the user can turn the engine for ease of access. The stand also incorporates wheels and casters to allow mobility across a smooth, flat surface

OPERATION

Before applying load

- With the mounting arms loose from the mounting plate (but not removed) bolt the mounting arms to the rear of the engine using the bell housing mounting bolts (bolts not supplied).
- Make sure the engine is centered and straight on the mounting plate, then tighten the mounting arms to the engine, and the mounting arms to the mounting plate
- After making sure all connections are tight, SLOWLY lower the hoist, transferring load to the stand.

TO REMOVE AN ENGINE FROM THE STAND

Attach the hoist to the engine using a sling or similar device.

After the hoist and sling are secure to the engine, raise the hoist, taking the load off of the stand.

The mounting bolts can be removed freeing the stand from the engine

INSPECTION

A complete visual inspection must be made before each use of the stand.

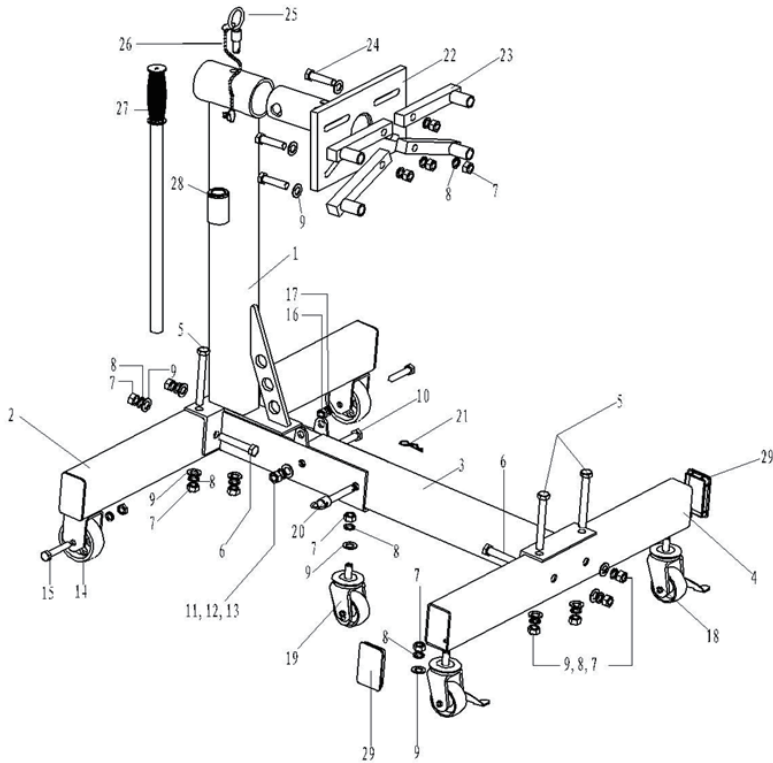
Check for broken or cracked welds, excessive rust, and loose, damaged or missing parts.

Check that the wheels and casters operate smoothly.

Also check that the mounting plate rotation lock works properly before applying the load. If any problems as described above or otherwise are found, remove the stand from service. Also inspect the label; making sure that it is legible, and securely attached to the stand. If not, call the manufacturer's parts department for a replacement.

If the stand has been, or is believed to have been subjected to an abnormal load or shock load, you must inspect the stand immediately before putting the stand into or resuming service.

ENGINE STAND



Item.	Name	Qty	Item.	Name	Qty	Item.	Name	Qty
1	Mast Assembly	1	11	Nut M10	1	21	Spring Clip	1
2	Rear Leg	1	12	Spring Washer 10	1	22	Mounting Head	1
3	Cross Member	1	13	Washer 10	1	23	Mounting Adaptor	4
4	Front Leg	1	14	Wheel	2	24	Bolt M12x55	4
5	Bolt M12x100	4	15	Bolt M8X65	2	25	Head Locking Pin	1
6	Bolt M12x70	4	16	Nut M8	2	26	Chain	1
7	Nut M12	15	17	Spring Washer 8	2	27	Handle	1
8	Spring Washer 12	15	18	Locking Caster	2	28	Grommet	1
9	Washer 12	15	19	Caster	1	29	Cap	4
10	Bolt M10x75	1	20	Pin	1			



KING TONY



Enjoy your work

KING TONY TOOLS CO., LTD.

No11, 150 Alley, 516 Lane, 2 Sec., Hsi Nan Rd.,
Wu-jih shiang, Taichung Hsien, Taiwan, R.O.C.

Tel:886-4-2335-3567 Fax:886-4-2335-3642

<http://www.kingtony.com>

EC DECLARATION OF CONFORMITY

FOR NON-ANNEX IV MACHINERY

IN ACCORDANCE WITH

MACHINERY SAFETY DIRECTIVES

2006/42/EC

WE, **KING TONY TOOLS CO., LTD.** HEREBY CERTIFY THAT THE MACHINERY DESCRIBED BELOW CONFORMS WITH THE ESSENTIAL HEALTH AND SAFETY REQUIREMENTS OF MACHINERY SAFETY DIRECTIVES 2006/42/EC ON THE APPROXIMATION OF THE LAWS OF THE MEMBER STATES RELATING TO THE SAFETY OF MACHINERY,

Engine Stand

09TY135-100A-B 09TY135-150A-B 09TY135-125A-B

AND COMPLY WITH THE PROVISIONS SET OUT IN THE FOLLOWING EUROPEAN STANDARD:
EN ISO 12100:2010 /EN ISO 13857:2008 /EN349:1993+A1:2008



DATE OF ISSUE: 10th November 2015

NAME: Li. Hsien-Wen

POSITION/TITLE: GENERAL MANAGER

SIGNATURE: Lin Hsien-Wen

CONSIGNES DE SECURITE

S'assurer de bien comprendre tous les avertissements et les consignes avant d'utiliser ce support.

Ne jamais excéder la capacité nominale. À utiliser uniquement sur une surface dure et plane capable de supporter la charge.

Verrouiller le mécanisme de rotation du plateau avant de charger le moteur.

Vérifier que le moteur est bien centré et fixé au plateau avant de charger sur le support.

Une charge mal-centrée peut faire pivoter la poignée une fois le mécanisme de rotation déverrouillé.

Déverrouiller le mécanisme de rotation doucement et avec attention.

Ne jamais tenter de manœuvrer le support et la charge sur un sol fissuré ou non-dégagé.

Ne jamais travailler directement sous la charge supportée. Contrôler visuellement l'état du support avant

l'utilisation. Vérifier l'absence de fissures dans la soudure, de métal tordu, et de pièces mal fixées,

endommagées ou manquantes. Utiliser uniquement les accessoires et adaptateurs fournis et approuvés par

King Tony. Ne jamais modifier ce produit. Le non-respect de ces avertissements pourrait entraîner des

blessures personnelles, des dégâts matériels et/ou la mort. Ce support est utilisé pour supporter un moteur

type automobile lors qu'il est retiré du véhicule. Cet appareil est conçu pour faciliter l'accès au moteur pour

l'entretien et/ou le montage. Le support comporte un plateau rotatif avec système de verrouillage pour que

l'utilisateur puisse tourner le moteur pour faciliter l'accès. Le support est également monté sur roulettes pour

permettre de le manœuvrer sur une surface plane et lisse.

OPERATION

Avant de charger

- Avec les bras supports non-fixés au plateau (mais pas totalement détachés), attacher les bras supports à l'arrière du moteur en utilisant les boulons de la boîte de vitesse (boulons non-fournis).
- Vérifier que le moteur est bien centré et droit sur le plateau, puis bien attacher les bras supports au moteur, et puis attacher les bras supports au plateau.
- Une fois les raccords bien serrés, baisser DOUCEMENT la grue d'atelier pour transférer la charge au support.

POUR ENLEVER LE MOTEUR DU SUPPORT

Attacher le moteur à la grue d'atelier en utilisant une sangle ou un dispositif similaire.

Une fois que la grue et la sangle sont bien fixées au moteur, remonter la grue pour enlever la charge du support moteur. Il est désormais possible d'enlever les boulons pour détacher le moteur du support.

CONTRÔLE VISUEL

Un contrôle visuel complet doit être effectué avant chaque utilisation de ce support.

Vérifier que la soudure n'est pas fissurée ni cassée, l'absence de rouille excessive, et que les pièces ne sont pas desserrées, endommagées ou manquantes. Vérifier également que les roulettes tournent librement.

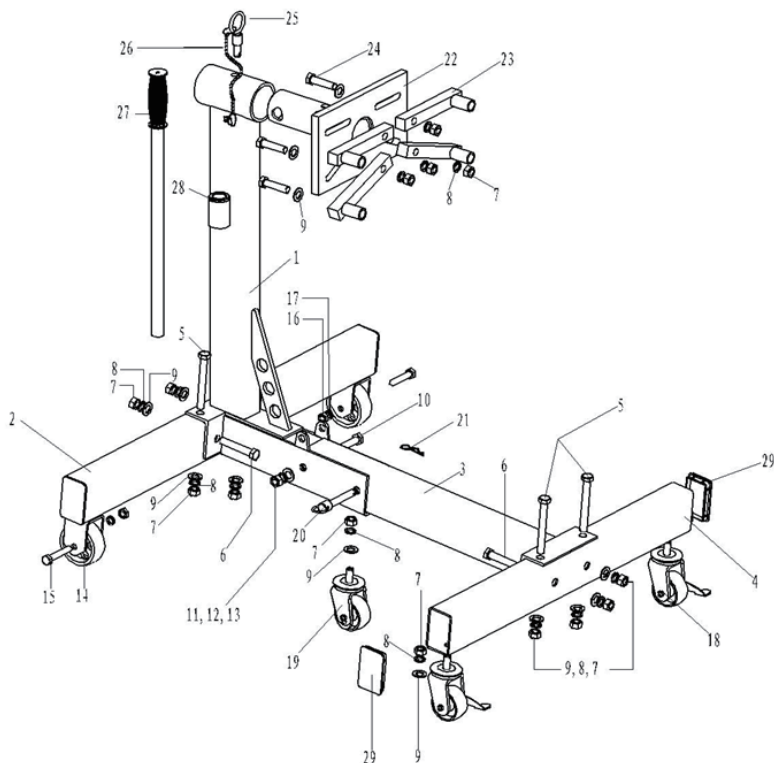
Vérifier que le verrouillage de la rotation du plateau fonctionne correctement avant de charger le moteur.

Si un des problèmes détaillés ci-dessus ou un autre problème est repéré, il faut arrêter immédiatement

d'utiliser le support. Il faut également que l'étiquette soit bien lisible et fixées fermement sur le support. Sinon, contacter le SAV King Tony pour commander une nouvelle étiquette.

Si le support a été soumis (ou si vous croyez qu'il a été soumis) à une charge anormale ou à un choc, il faut absolument contrôler l'état du support avant de l'utiliser ou de continuer à l'utiliser.

SUPPORT POUR MOTEUR



Item.	Name	Qty	Item.	Name	Qty	Item.	Name	Qty
1	Ensemble de mât	1	11	Écrou M10	1	21	Clip de ressort	1
2	Vrai jambe	1	12	Rondelle à ressort 10	1	22	Tête de montage	1
3	Croix Membre	1	13	Rondelle 10	1	23	Adaptateur de montage	4
4	Patte avant	1	14	Roue	2	24	Boulon M12x55	4
5	Boulon M12x100	4	15	Boulon M8x65	2	25	Bouton de verrouillage de la tête	1
6	Boulon M12x70	4	16	Écrou M8	2	26	Chaîne	1
7	Écrou M12	15	17	Rondelle à ressort 8	2	27	Hander	1
8	Rondelle à ressort 12	15	18	Roulette de verrouillage	2	28	Grommet	1
9	Rondelle 12	15	19	Caster	1	29	Cap	4
10	Boulon M10x75	1	20	Pin	1			



KING TONY



Enjoy your work

KING TONY TOOLS CO., LTD.

No11, 150 Alley, 516 Lane, 2 Sec., Hsi Nan Rd.,
Wu-jih shiang, Taichung Hsien, Taiwan, R.O.C.

Tel:886-4-2335-3567 Fax:886-4-2335-3642

<http://www.kingtony.com>

**DÉCLARATION DE CONFORMITÉ CE
POUR DES MACHINES NON-ANNEXE IV
CONFORMÉMENT AUX
DIRECTIVES DE SÉCURITÉ DES MACHINES
2006/42/EC**

NOUS, **KING TONY TOOLS CO., LTD.** CERTIFIONS PAR LA PRÉSENTE QUE LA MACHINERIE DÉCRITE CI-DESSOUS EST CONFORME AUX EXIGENCES DE SANTÉ ET DE SÉCURITÉ DES DIRECTIVES RELATIVES AUX MACHINES : 2006/42/CE, 2014/35/UE ET 2004/108/CE RELATIVES AU RAPPROCHEMENT DES LÉGISLATIONS DES ÉTATS MEMBRES CONCERNANT LA SÉCURITÉ DES MACHINES.

SUPPORT POUR MOTEUR

09TY135-100A-B 09TY135-150A-B 09TY135-125A-B

ET CONFORME AUX DISPOSITIONS PRÉVUES DANS LES NORMES SUIVANTES :
EN ISO 12100:2010 /EN ISO 13857:2008 /EN349:1993+A1:2008



DATE OF DELIVRANCE : 10 novembre 2015

NOM : Li. Hsien-Wen

INTITULÉ DE POSTE : GENERAL MANAGER

SIGNATURE: Lin Hsien-Wen

INSTRUCCIONES DE SEGURIDAD

Asegurarse de entender bien todas las advertencias y las instrucciones de este folleto. Nunca sobrepasar la capacidad nominal. Solo se puede usar sobre una superficie plana que puede soportar la carga. Bloquear el sistema de rotación de la tabla antes de cargar el motor. Verificar que el motor sea bien colocado y fijado a la tabla antes de cargarlo sobre el soporte. Desbloquear el sistema de rotación de manera lenta y cuidadosa. Nunca intentar de usar el soporte y su carga sobre superficies obstruidas o dañadas. Nunca trabajar debajo de la carga fijada en el soporte. Mirar siempre si el soporte no tiene defectos o daños antes de usarlo. Verificar que las soldaduras no tengan ningún tipo de fisura, que el metal no sea torcido, que las piezas sean bien atornilladas, que sean en buen estado y que no falte ninguna. Solo se puede usar los accesorios y adaptadores suministrados y autorizados por KING TONY. Nunca modificar el producto. No respetar estas advertencias puede causar heridas graves, daños materiales y/o la muerte. Este soporte ha sido fabricado para sostener un motor tipo automóvil cuando se retira del vehículo. Este producto ha sido fabricado para facilitar el acceso a un motor para su mantenimiento y/o su montaje. El producto de compone de una tabla rotativa con sistema de bloqueo para que el usuario pueda girar motor para un acceso facilitado. El soporte tiene ruedas para permitir el movimiento del aparato sobre superficies planas y lisas.

MANIPULACIÓN

Antes de cargar el soporte

- Con las garras desbloqueadas de la tabla (tampoco totalmente sueltas), fijarlas en la parte trasera del motor usando los pernos de la campana (pernos no suministrados).
- Verificar que el motor sea bien centrado y recto en la tabla, fijar bien las garras al motor y bloquear las garras en la tabla.
- Una vez los empalmes bien atornillados, bajar SUAVEMENTE la grúa para taller para mover la carga hacia el soporte.

PARA QUITAR EL MOTOR DEL SOPORTE.

Atar le motor a la grúa para taller usando una correa o algo similar. Una vez la grúa y la correa bien fijadas al motor, subir la grúa para quitar la carga del soporte. Entonces se puede quitar los pernos para desbloquear el motor del soporte.

CONTROL VISUAL

Se tiene que realizar un control visual completo antes de cada uso del soporte. Verificar que la soldadura no tenga ni fisura ni rotura. También verificar que no haya ningún tipo de óxido, que no falten piezas y que aquellas no sean desatornilladas. Verificar el buen movimiento de las ruedas. Verificar que el sistema de bloqueo funcione antes de cargar el motor. Si se detecta uno de estos problemas, **NO SE PUEDE** usar el soporte. La etiqueta del soporte tiene que estar bien pegada y limpia. Si no se reúnen estas condiciones, gracias por contactar el SPV KING TONY para pedir una nueva etiqueta o arreglar el fallo. Si piensa que el soporte ha sido cargado más de lo que se puede, o si ha sufrido un choque, hay que controlar el soporte antes de poder usarlo otra vez.



KING TONY



Enjoy your work

KING TONY TOOLS CO., LTD.

No11, 150 Alley, 516 Lane, 2 Sec., Hsi Nan Rd.,
Wu-jih shiang, Taichung Hsien, Taiwan, R.O.C.

Tel:886-4-2335-3567 Fax:886-4-2335-3642

<http://www.kingtony.com>

DECLARACIÓN DE CONFORMIDAD CE

PARA MÁQUINA NO-ANEXO IV

SEGÚN LAS

MACHINERY SAFETY DIRECTIVESV

2006/42/EC

NOSOTROS, **KING TONY TOOLS CO., LTD.** CERTIFICAMOS QUE EL PRODUCTO DE LA DESCRIPCIÓN A CONTINUACIONES ESTÁ CONFORME A LA EXIGENCIAS DE SALUD Y SEGURIDAD DE LAS DIRECTIVAS PARA MÁQUINAS : 2006/42/CE, 2014/35/UE Y 2004/108/CE EN RELACIÓN CON LA LEGISLACIÓN DE LOS ESTADOS MIEMBROS SOBRE SEGURIDAD DE MÁQUINAS.

SOPORTE PARA MOTOR

09TY135-100A-B 09TY135-150A-B 09TY135-125A-B

CONFORME A LA DISPOSICIONES INCLUIDAS EN LA NORMAS:

EN ISO 12100:2010 /EN ISO 13857:2008 /EN349:1993+A1:2008



FECHA: 10 novembre 2015

NOMBRE: Li. Hsien-Wen

CARGO: GENERAL MANAGER

FIRMA: Lin Hsien-Wen

SAFETY INSTRUCTIONS

Study, understand and follow all warnings and instructions before using this stand. Do not exceed rated capacity. Use only on hard, level surfaces capable of sustaining the load.

Lock mounting plate-rotating mechanism before applying the load.

Be sure engine is centered and secured to mounting plate before applying load to stand.

Off center loads may make the load and handle rotate in either direction when the rotational locking is released.

Release the rotational locking device slowly and carefully.

Do not attempt to move the loaded stand across a floor having cracks or other obstacles that could impede movement. Never work directly under a supported load.

Visually inspect stand for damage before use. Check for cracked welds, bent metal and loose, damaged or missing parts. Use only attachments and adapters supplied and approved by the manufacturer. Do not make any alterations to this product.

Failure to heed these warnings may result in personal injury, property damage and/or death. This engine stand is a device used to mount an automotive type of engine when removed from a vehicle. This device is designed to provide access to the engine for servicing and/or rebuilding. The stand incorporates a locking, rotating mounting plate so that the user can turn the engine for ease of access. The stand also incorporates wheels and casters to allow mobility across a smooth, flat surface.

OPERATION

Before applying load

- With the mounting arms loose from the mounting plate (but not removed) bolt the mounting arms to the rear of the engine using the bell housing mounting bolts (bolts not supplied).
- Make sure the engine is centered and straight on the mounting plate, then tighten the mounting arms to the engine, and the mounting arms to the mounting plate
- After making sure all connections are tight, SLOWLY lower the hoist, transferring load to the stand.

TO REMOVE AN ENGINE FROM THE STAND

Attach the hoist to the engine using a sling or similar device.

After the hoist and sling are secure to the engine, raise the hoist, taking the load off of the stand.

The mounting bolts can be removed freeing the stand from the engine

INSPECTION

A complete visual inspection must be made before each use of the stand.

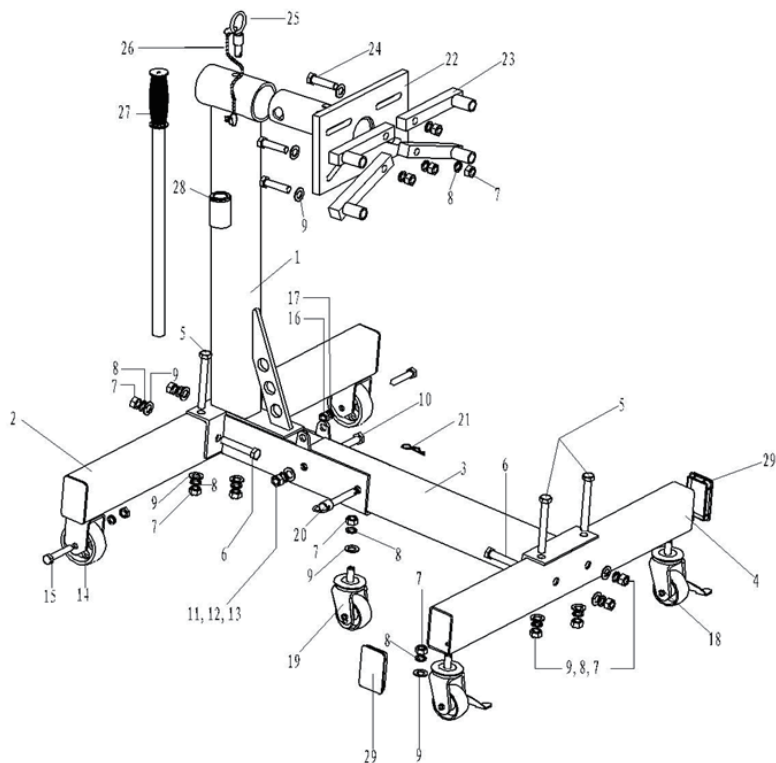
Check for broken or cracked welds, excessive rust, and loose, damaged or missing parts.

Check that the wheels and casters operate smoothly.

Also check that the mounting plate rotation lock works properly before applying the load. If any problems as described above or otherwise are found, remove the stand from service. Also inspect the label; making sure that it is legible, and securely attached to the stand. If not, call the manufacturer's parts department for a replacement.

If the stand has been, or is believed to have been subjected to an abnormal load or shock load, you must inspect the stand immediately before putting the stand into or resuming service.

ENGINE STAND



Item .	Name	Qty	Item .	Name	Qty	Item .	Name	Qty
1	mast Assembly	1	11	moer M10	1	21	Spring Clip	1
2	Rear Beam	1	12	Veerring 10	1	22	mounting Head	1
3	dwarsbalk	1	13	wasmachine 10	1	23	Mounting Adaptor	4
4	voorste Been	1	14	Wiel	2	24	bout M12x55	4
5	Bolt M12x100	4	15	Bolt M8X65	2	25	Head borgpen	1
6	bout M12x70	4	16	moer M8	2	26	Keten	1
7	moer M12	15	17	Veerring 8	2	27	hander	1
8	Veerring 12	15	18	vergrendeling Caster	2	28	Grommet	1
9	wasmachine 12	15	19	gieter	1	29	pet	4
10	bout M10x75	1	20	Pin	1			



KING TONY



Enjoy your work

KING TONY TOOLS CO., LTD.

No11, 150 Alley, 516 Lane, 2 Sec., Hsi Nan Rd.,

Wu-jih shiang, Taichung Hsien, Taiwan, R.O.C.

Tel:886-4-2335-3567 Fax:886-4-2335-3642

<http://www.kingtony.com>

**EC DECLARATION OF CONFORMITY
FOR NON-ANNEX IV MACHINERY
IN ACCORDANCE WITH
MACHINERY SAFETY DIRECTIVES**

2006/42/EC

WE, **KING TONY TOOLS CO., LTD.** HEREBY CERTIFY THAT THE MACHINERY DESCRIBED BELOW CONFORMS WITH THE ESSENTIAL HEALTH AND SAFETY REQUIREMENTS OF MACHINERY SAFETY DIRECTIVES 2006/42/EC ON THE APPROXIMATION OF THE LAWS OF THE MEMBER STATES RELATING TO THE SAFETY OF MACHINERY,

Engine Stand

09TY135-100A-B 09TY135-150A-B 09TY135-125A-B

AND COMPLY WITH THE PROVISIONS SET OUT IN THE FOLLOWING EUROPEAN STANDARD:
EN ISO 12100:2010 /EN ISO 13857:2008 /EN349:1993+A1:2008



DATE OF ISSUE: 10th November 2015

NAME: Li. Hsien-Wen

POSITION/TITLE: GENERAL MANAGER

SIGNATURE: Lin Hsien-Wen

SAFETY INSTRUCTIONS

Study, understand and follow all warnings and instructions before using this stand. Do not exceed rated capacity. Use only on hard, level surfaces capable of sustaining the load.

Lock mounting plate-rotating mechanism before applying the load.

Be sure engine is centered and secured to mounting plate before applying load to stand.

Off center loads may make the load and handle rotate in either direction when the rotational locking is released.

Release the rotational locking device slowly and carefully.

Do not attempt to move the loaded stand across a floor having cracks or other obstacles that could impede movement. Never work directly under a supported load.

Visually inspect stand for damage before use. Check for cracked welds, bent metal and loose, damaged or missing parts. Use only attachments and adapters supplied and approved by the manufacturer. Do not make any alterations to this product.

Failure to heed these warnings may result in personal injury, property damage and/or death. This engine stand is a device used to mount an automotive type of engine when removed from a vehicle. This device is designed to provide access to the engine for servicing and/or rebuilding. The stand incorporates a locking, rotating mounting plate so that the user can turn the engine for ease of access. The stand also incorporates wheels and casters to allow mobility across a smooth, flat surface.

OPERATION

Before applying load

- With the mounting arms loose from the mounting plate (but not removed) bolt the mounting arms to the rear of the engine using the bell housing mounting bolts (bolts not supplied).
- Make sure the engine is centered and straight on the mounting plate, then tighten the mounting arms to the engine, and the mounting arms to the mounting plate
- After making sure all connections are tight, SLOWLY lower the hoist, transferring load to the stand.

TO REMOVE AN ENGINE FROM THE STAND

Attach the hoist to the engine using a sling or similar device.

After the hoist and sling are secure to the engine, raise the hoist, taking the load off of the stand.

The mounting bolts can be removed freeing the stand from the engine

INSPECTION

A complete visual inspection must be made before each use of the stand.

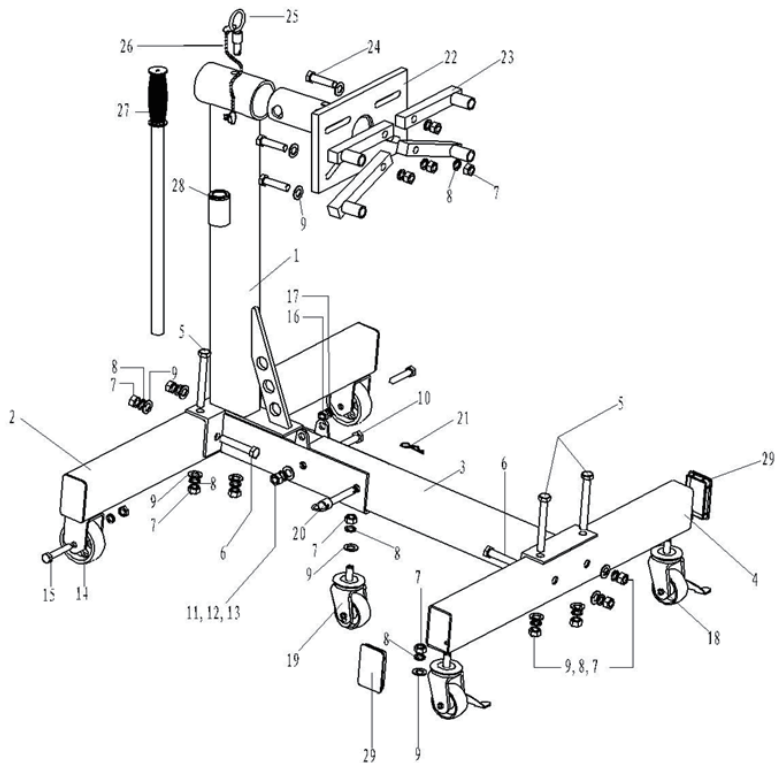
Check for broken or cracked welds, excessive rust, and loose, damaged or missing parts.

Check that the wheels and casters operate smoothly.

Also check that the mounting plate rotation lock works properly before applying the load. If any problems as described above or otherwise are found, remove the stand from service. Also inspect the label; making sure that it is legible, and securely attached to the stand. If not, call the manufacturer's parts department for a replacement.

If the stand has been, or is believed to have been subjected to an abnormal load or shock load, you must inspect the stand immediately before putting the stand into or resuming service.

ENGINE STAND



Item.	Name	Qty	Item.	Name	Qty	Item.	Name	Qty
1	Mastmontage	1	11	Mutter M10	1	21	Federbügel	1
2	Echtes Bein	1	12	Federscheibe 10	1	22	Befestigungskopf	1
3	Querträger	1	13	Unterlegscheibe 10	1	23	Befestigungsadapter	4
4	Vorderbein	1	14	Rad	2	24	Schraube M12x55	4
5	Schraube M12x100	4	15	Schraube M8X65	2	25	Kopfverriegelungsstift	1
6	Schraube M12x70	4	16	Mutter M8	2	26	Kette	1
7	Mutter M12	15	17	Federscheibe 8	2	27	Hander	1
8	Federscheibe 12	15	18	Verriegelungsrolle	2	28	Durchführungen	1
9	Unterlegscheibe 12	15	19	Zaubern	1	29	Kappe	4
10	Schraube M10x75	1	20	Stift	1			



KING TONY



Enjoy your work

KING TONY TOOLS CO., LTD.

No11, 150 Alley, 516 Lane, 2 Sec., Hsi Nan Rd.,
Wu-jih shiang, Taichung Hsien, Taiwan, R.O.C.

Tel:886-4-2335-3567 Fax:886-4-2335-3642

<http://www.kingtony.com>

EC DECLARATION OF CONFORMITY

FOR NON-ANNEX IV MACHINERY

IN ACCORDANCE WITH

MACHINERY SAFETY DIRECTIVES

2006/42/EC

WE, **KING TONY TOOLS CO., LTD.** HEREBY CERTIFY THAT THE MACHINERY DESCRIBED BELOW CONFORMS WITH THE ESSENTIAL HEALTH AND SAFETY REQUIREMENTS OF MACHINERY SAFETY DIRECTIVES 2006/42/EC ON THE APPROXIMATION OF THE LAWS OF THE MEMBER STATES RELATING TO THE SAFETY OF MACHINERY,

Engine Stand

09TY135-100A-B 09TY135-150A-B 09TY135-125A-B

AND COMPLY WITH THE PROVISIONS SET OUT IN THE FOLLOWING EUROPEAN STANDARD:
EN ISO 12100:2010 /EN ISO 13857:2008 /EN349:1993+A1:2008



DATE OF ISSUE: 10th November 2015

NAME: Li. Hsien-Wen

POSITION/TITLE: GENERAL MANAGER

SIGNATURE: Lin Hsien-Wen